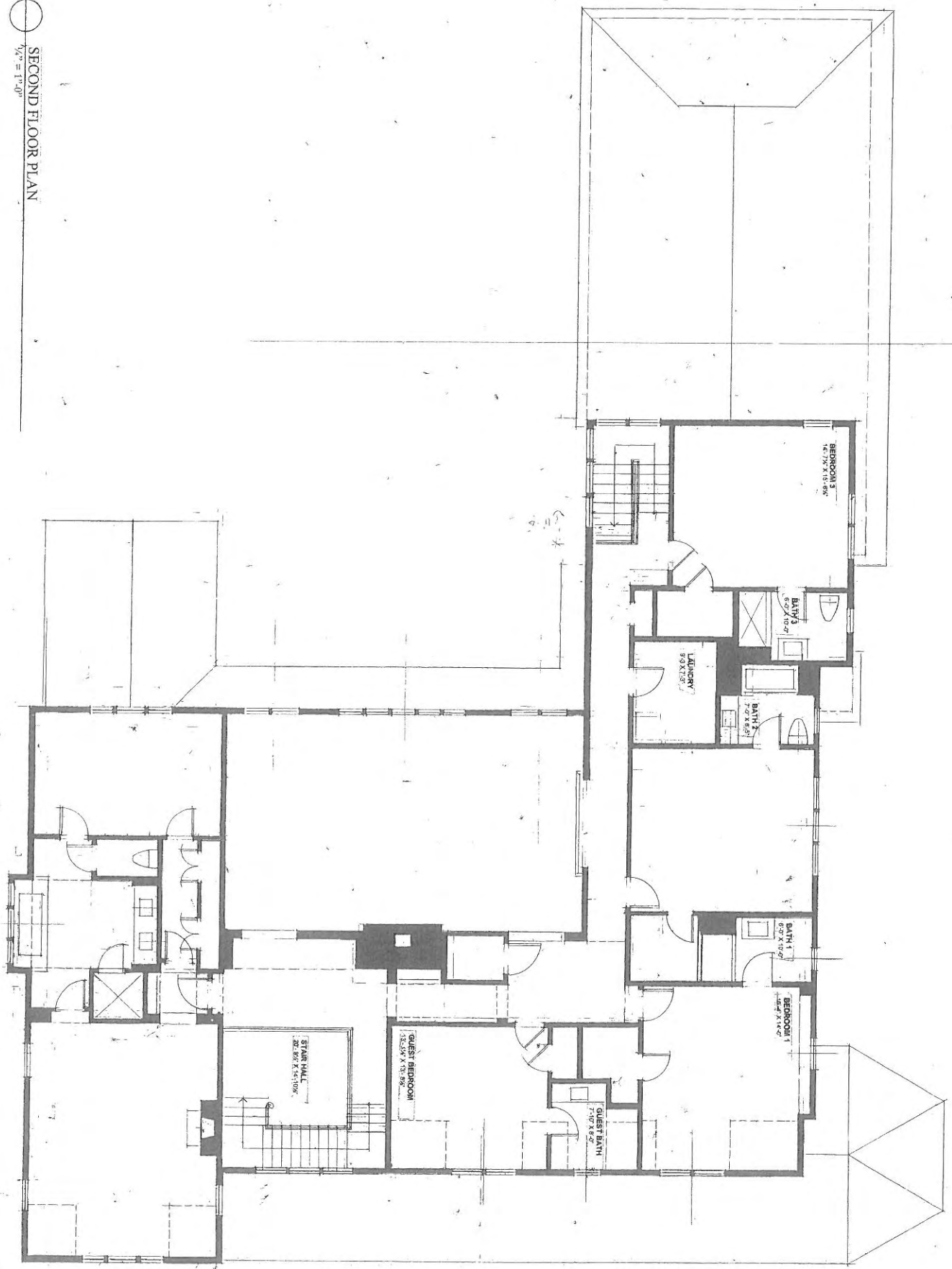
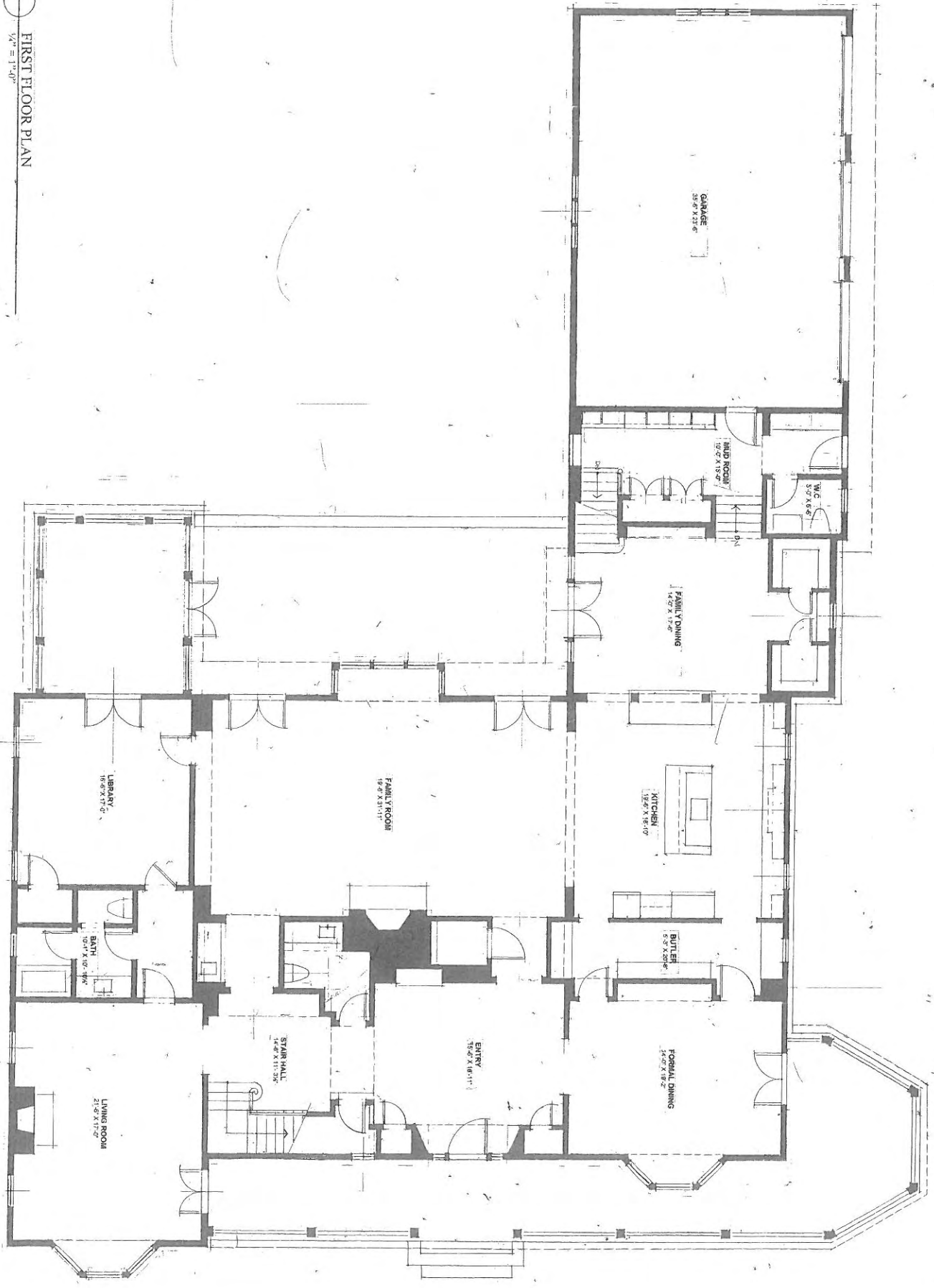


FREDERICK TAYLOR, AIA
143 OTIS STREET
WASHINGTON DC, 20017
(202) 638-8087
www.deryvtsarchitect.com

6740 MELODY LANE
BETHESDA, MD 20817

BASEVIC CONSTRUCTION
5200 RIVER ROAD BUILDING 6
BETHESDA, MD 20816
(301) 986-6960
www.basevic.com





CELLAR PLAN
 1/4" = 1'-0"

