

5104 Scarsdale Road

Bethesda, MD 20816

For Sale
\$1,489,000



Represented By
Robert Jenets
President & Principal Broker



**Stuart &
Maury**
REALTORS®

Serving Bethesda, Chevy
Chase and DC since 1956!



301.257.3200





Real property tax and other non-tax charges to be expected in the first fiscal year of ownership are \$15,102.27

House built in 1954

Lot size: 12,650 sq. ft.

Total finished living area approximately: 5,316 sq. ft. !!!

Woodacres Elementary

Pyle Middle School

Walt Whitman High

6 Bedrooms

5 Baths

FANTASTIC VALUE!

Life along the Massachusetts Avenue corridor is good, and those of us who live here find it to be just the right blend of suburban life with close-in convenience. Enjoy the arts and crafts at **Glen Echo Park**, take a leisurely walk along the **C&O Canal** or bike a short five blocks to the **Crescent Trail** and ride into thriving downtown Bethesda or all the way to Georgetown. The Little Fall Mall and the Westbard Shopping Center are each only a half mile away!



Main Level





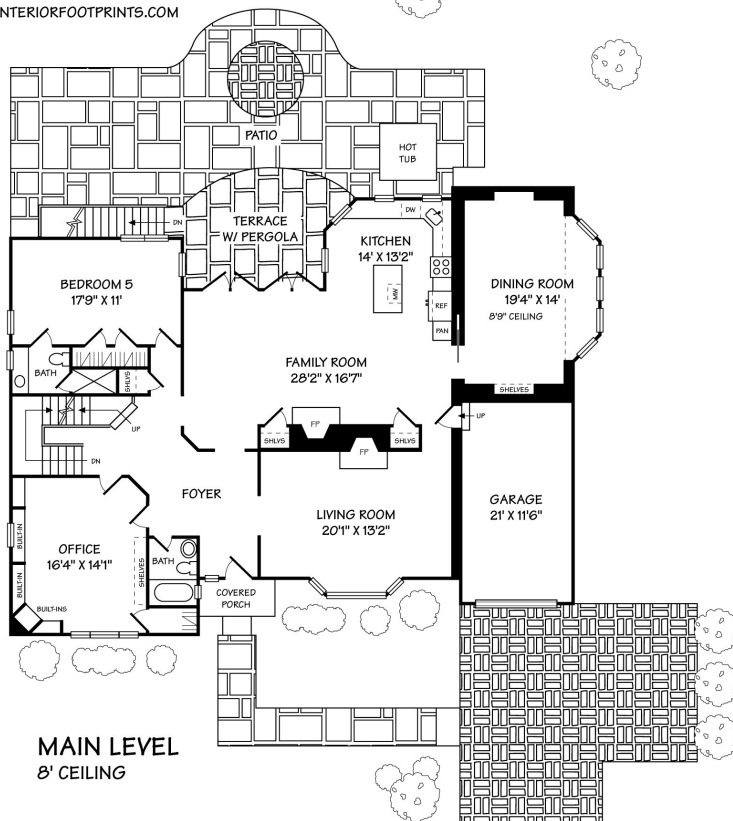
It is hard to know where to start in describing this unique and wonderful property. The first look is captivating, the way its warm, Tudor-styled design is nestled into the lush green setting. Blending classical elegance with a modern esthetic, the floor plan is spacious but never cavernous and has a natural entertainment flow. The airy foyer draws you gently around the corner to the nucleus of the house—a remodeled kitchen, casual dining, family room combination that has proven to be one of the most desirable elements for today’s lifestyle. The main level is enhanced by a private office next to a full bath and a bedroom with an en-suite bath. An ornate owner’s suite highlights the second level along with three more good sized bedrooms and a custom hall bath. The lower level is almost fully finished and yet there is an abundance of storage throughout the house. Brimming with personality, class, space and location, the value of this exciting home speaks for itself. Thank you for your interest and please enjoy your visit!

5104 SCARSDALE ROAD, BETHESDA, MD

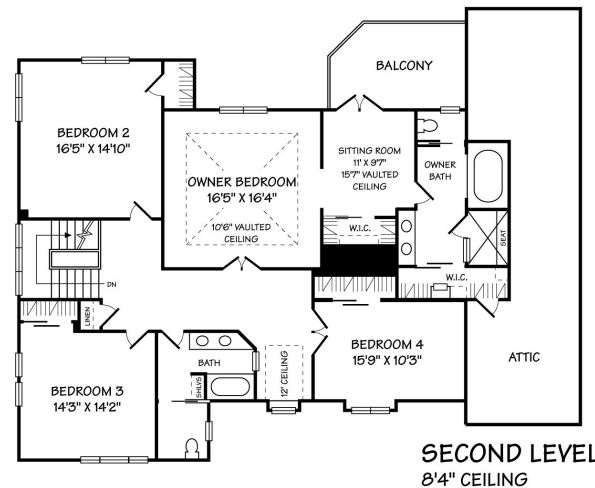
©2018 R. JENETS

ALL ILLUSTRATIONS AND DIMENSIONS ARE APPROXIMATE AND MAY VARY FROM ACTUAL STRUCTURE. DIMENSIONS HAVE BEEN ROUNDED. ALL INFORMATION DEEMED RELIABLE BUT NOT GUARANTEED.

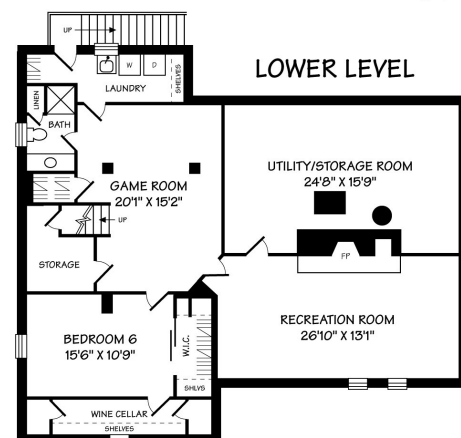
WWW.INTERIORFOOTPRINTS.COM



MAIN LEVEL
8' CEILING



SECOND LEVEL
8'4" CEILING



LOWER LEVEL



Stuart & Maury
REALTORS®

4833 Bethesda Avenue # 200



Sumner has a stellar reputation as one of the most desirable areas of Bethesda, known for the variety of stately and stylish homes lining its shady neighborhood streets. The atmosphere in Sumner is friendly and there is a spirit of community that makes people proud to live here. Development began in 1948 by the W.C. & A. N. Miller Company which had a fine reputation for its earlier communities of Wesley Heights and Spring Valley, and continued steadily through 1971. A later phase was built during the 1980's and the neighborhood was complete by 1990. The builders were careful to vary the design and style of the homes to have character but never the "cookie cutter" appearance of a tract development. Owning a home in Sumner gives you more than just a building with some rooms in it – you get the warm feeling of belonging that comes with being part of a wonderful tradition that has been carefully nurtured by its residents for a very long time. It's an excellent place to live and you will love it! Let me know if I can help.

Robert Jenets
Stuart & Maury, Inc.

(301) 257-3200 (cell)
(301) 654-3200 (office)

✉ Robert@RobertJenets.com
RobertJenets.com

