



This stunningly enhanced Chevy Chase Gardens colonial was doubled in size in 1999 and substantially renovated in 2004. Over 4000 sq. ft. of quality and superior craftsmanship from architect Paul Gaiser and Builder Jeffery Jones/Venture Homes LLC can be found throughout this gorgeous home. Located between the Friendship and Bethesda Metro Stations, this fine residence has it all.

The home features updated electrical wiring throughout, updated water piping including a new service entry line from the street, updated two-zone cooling, wired for sound & media behind walls throughout, and expanded cobblestone driveway and a complete exterior landscape renovation. What a house!

Property Details

5 Bedrooms
 3.5 Bathrooms
 Year Built 1939, updated '99 & '04
 Lot Size: 5400
 Est. Taxes: \$13,119 per yr
 Somerset Elementary (K-5)
 Westland Middle School (6-8)
 B-CC High School (9-12)

Matthew Maury has sold over \$785,000,000 in career sales, spanning over three decades.

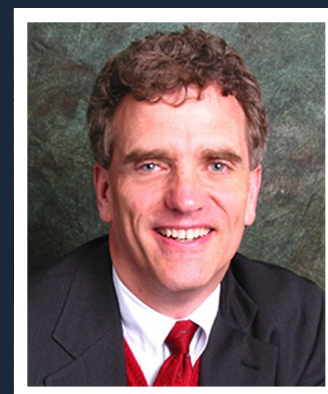
Cell: 301-928-8686

Email: matthew@matthewmaury.com

Website: www.MatthewMaury.com



4702 MORGAN DR CHEVY CHASE, MD 20815



Matthew Maury

Stuart & Maury,
 Inc. Realtors

Office: 301-654-3200

Cell: 301-928-8686

Fax: 301-656-6182

Matthew@MatthewMaury.com

MatthewMaury.com

HOME FOR SALE

4702 MORGAN DRIVE
 CHEVY CHASE, MD 20815



All information deemed reliable,
 but not guaranteed.

\$1,495,000



Features

Entrance Foyer (12' x 9')

Open foyer with honed slate flooring, double chair rail, double crown moldings, applied wall moldings, decorative leaded front door and windows, bench window seating & recessed lighting.

Dining Room (20' x 13')

Sweepingly large with double crown and chair rail, applied wall moldings, ceiling speakers, wood-burning fireplace w/marble surround & lighted wall sconces.

Den/office (front) (9'8" x 6'7")

15-pane door, high ceilings, wall of built-in desk/cabinets, recessed lighting.

Open Kitchen/breakfast room/family room (14'10" x 40')

Kitchen features Uba-Tuba granite counters, custom tear drop lighting, real stone flooring, limestone backsplash, brushed nickel hardware, abundant maple cabinets, a center island w/2nd sink, overhead pot rack, an atrium window over the stainless steel sink, recessed lighting, ceiling speakers, and stainless steel appliances including a commercial grade Wolf 6-burner gas stove w/double convection ovens, a matching panel Sub Zero refrigerator, Miele dishwasher, GE monogram microwave, two insinkerator. In short the kitchen is truly "chef quality!"

Breakfast Room

Table space with triple doors to the appealing new Trek deck, recessed lighting and an open staircase to the lower level.

Family room

Fully open to the kitchen with a wall of built-in cabinets and Uba-Tuba granite counters & a built-in Pioneer TV (conveys) fully installed!

Den #2 (memorabilia room) (10'6" x 9'6")

High ceilings, wall of built-ins shelving, recessed lighting.

Powder Room

Honed slate flooring, beaded walls with chair rail, granite top. There is a ample hall pantry closet too!

Master Bedroom (15' x 21'6"-at widest points)

Flooded with light from abundant windows, this room features a double closet, a utility closet & a walk-in closet. Window bench seating, ceiling fan & recessed lighting

Master Bath

Uba-Tuba granite counters, double vanities, real stone flooring, separate steam shower w/limestone and separate commode.

Bedroom 2 (front right) (14'2" x 11'2")

Plantation shutters, ceiling fan, closet.

Bedroom 3 (front left) (10' x 13'4")

Plantation shutters, ceiling fan, closet, stairs to storage attic.

Bedroom 4—Back right (10'9" x 16'8")

Built-in desk, closet, plantation shutters & ceiling fan.

Hall bath

Limestone tile, tub, recessed lighting, linen closet, dual sinks, ceiling speakers. There's a double linen closet in the hall too! Sliding glass door to backyard



Kitchen



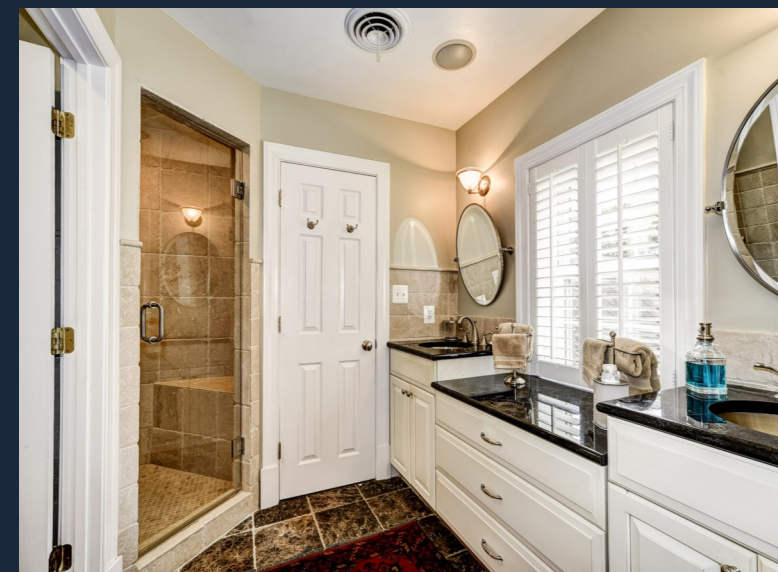
Dining Room



Foyer



Master Bedroom



Master bath



Lower Level Entertainment room



Recreation room

Staircase to lower level

Built-in cabinet with drawers, glassed doors, Uba-Tuba granite top w/limestone backsplash, lighted wall sconces, fully finished wood stairs to lower level.

Lower level recreation room (19'4" x 12'4")

Hardwood flooring, recessed lighting, ceiling speakers, utility closet, storage closet under the stairs, Samsung TV conveys!

Kitchenette and entertainment room (14'6" x 13'6")

Center island with drawers, full view doors to cobblestone patio, recessed lighting, maple cabinets, Bar w/Uba-Tuba granite & stool seating for four, Viking stainless steel wine/beverage cooler, Built-in KitchenAid stainless steel 2-drawer refrigerator/freezer & dishwasher, Sony TV conveys!, hardwood flooring.

Bedroom #5 (15'8" x 12')

Two out-of-ground windows, recessed lighting, three closets, Samsung TV conveys!, hardwood flooring.

Full bath #3

Tiled, whirlpool tub, linen closet, recessed lighting.

Laundry Room

Maple cabinets, tile floor, Whirlpool front loading washer & dryer, two utility closets.

Huge utility/storage room (33'8" x 9'2")

Garage –TEK product with wall hanging capabilities and built-in shelving and cabinets. Door to rear yard. Workbench conveys too!

Backyard

Fully fenced, Pro-shot hoop, cobblestone patio and flagstone patio, gorgeous deck (2014), gas hookup for grill.

Additional Information

Be advised, the freezer and refrigerator in the lower level, and the stair runner/hardware to the second floor do NOT convey.